



India Meteorological Department
(Ministry of Earth Sciences)

SPECIAL MESSAGE NO. 2 (BOB/06/2024)

TIME OF ISSUE: 1000 HOURS IST

DATED: 21.10.2024

FROM: INDIA METEOROLOGICAL DEPARTMENT (FAX NO. 24643965/24699216/24623220)

TO: CONTROL ROOM, NDM, MINISTRY OF HOME AFFAIRS (FAX.NO. 23093750)
CONTROL ROOM NDMA (FAX.NO. 26701729)
CABINET SECRETARIAT (FAX.NO.23012284, 23018638)
PS TO HON'BLE MINISTER FOR S & T AND EARTH SCIENCES (FAX NO.23316745)
SECRETARY, MOES (FAX NO. 24629777)
H.Q. (INTEGRATED DEFENCE STAFF AND CDS) (FAX NO. 23005137/23005147)
DIRECTOR GENERAL, DOORDARSHAN (23385843)
DIRECTOR GENERAL, AIR (23421105, 23421219)
PIB MOES (FAX NO. 23389042)
UNI (FAX NO. 23355841)
D.G. NATIONAL DISASTER RESPONSE FORCE (NDRF) (FAX NO. 26105912, 2436
3260)
DIRECTOR, PUNCTUALITY, INDIAN RAILWAYS (FAX NO. 23388503)
CHIEF SECRETARY, ODISHA (FAX NO. 0674-2536660)
CHIEF SECRETARY, WEST BENGAL (FAX NO. 033-22144328)
CHIEF SECRETARY, ANDAMAN & NICOBAR ISLANDS (FAX NO. 03192-232656)
CHIEF SECRETARY, TAMIL NADU (FAX NO. 044-25672304)
CHIEF SECRETARY, ANDHRA PRADESH (FAX NO. 0863-2441029)
CHIEF SECRETARY, PUDUCHERRY (FAX NO. 0413-2334145)

Subject: Low Pressure Area formed over eastcentral Bay of Bengal and adjoining North Andaman Sea: Pre-Cyclone Watch for Odisha and West Bengal coasts

Yesterday's cyclonic circulation lay over North Andaman Sea lay over North Andaman Sea and adjoining eastcentral & southeast Bay of Bengal in the same evening (1730 hours IST of 20th October). Under its influence a ***Low Pressure Area*** formed over the Eastcentral Bay of Bengal and adjoining north Andaman Sea in the early morning (0530 hours IST) of today, the 21st October 2024.

It is very likely to move west-northwestwards and intensify into a depression by 22nd October morning and into a cyclonic storm by 23rd October, 2024 over eastcentral Bay of Bengal. Thereafter, it is very likely to move northwestwards and reach northwest Bay of Bengal off Odisha-West Bengal coasts by 24th October morning.

Forecast track and intensity are given in the following table:

Date/Time (IST)	Position (Lat. °N/ Long. °E)	Maximum Sustained Surface Wind Speed (Kmph)	Category Of Cyclonic Disturbance
21.10.24/0530	14.5/92.0	20-30 gusting to 40	Low Pressure Area
21.10.24/1730	14.7/91.4	35-45 gusting to 55	Well Marked Low
22.10.24/0530	15.0/90.7	45-55 gusting to 65	Depression
22.10.24/1730	15.5/89.8	55-65 gusting to 75	Deep Depression
23.10.24/0530	16.2/89.0	65-75 gusting to 85	Cyclonic Storm
23.10.24/1730	17.4/88.4	80-90 gusting to 100	Cyclonic Storm
24.10.24/0530	19.0/87.8	100-110 gusting to 120	Severe Cyclonic Storm

Warnings:

(i) Rainfall Warning:

- ❖ Light to moderate rainfall at most places with **heavy to very heavy rainfall (7-20 cm)** at isolated places is very likely over Andaman Islands on 21st October.
- ❖ Light to moderate rainfall at most places with **heavy rainfall (07-11 cm)** at isolated places is very likely over Odisha on 23rd Oct. & **heavy to very heavy rainfall** at a few places and **extremely heavy rainfall (≥ 21 cm)** at isolated places on 24th & 25th October.
- ❖ **Light to moderate rainfall at most places with heavy rainfall** at isolated places is very likely over **coastal districts of West Bengal** on 23rd October and heavy to very heavy rainfall at a few places **with extremely heavy rainfall** at isolated places over Gangetic West Bengal on 24th & 25th October.
- ❖ Light to moderate rainfall at many places with **heavy rainfall** at isolated places is very likely over North coastal Andhra Pradesh on 24th and 25th October.

(ii) Wind Warning:

Andaman Sea: Squally weather with wind speed reaching 35-45 gusting to 55 kmph is very likely over Andaman Sea on 21st October.

Eastcentral Bay of Bengal: Squally wind speed reaching 35-45 gusting to 65 kmph is very likely on 21st October, 55-65 gusting to 75 kmph by 22nd evening, 70-90 kmph gusting to 100 kmph from 23rd evening till 24th morning.

Adjoining areas of Westcentral Bay of Bengal: Squally wind speed reaching 45-55 gusting to 65 kmph is very likely on 23rd and 24th Oct.

North Bay of Bengal: Squally wind speed reaching 40-50 gusting to 60 kmph is very likely to commence from 23rd morning. It would gradually increase becoming gale wind speed reaching 100-110 kmph gusting to 120 kmph from 24th Oct evening to 25th Oct morning and decrease thereafter.

Along & off Odisha-west Bengal coasts: Squally wind speed reaching 40-50 gusting to 60 kmph is very likely to commence from 23rd Oct evening. It would gradually increase becoming gale wind speed reaching 100-110 kmph gusting to 120 kmph from 24th Oct night till 25th Oct morning.

(iii) Sea Condition:

Andaman Sea: Sea condition is likely to be **Moderate to Rough** on **21st October**.

Eastcentral Bay of Bengal: Sea condition is likely to become **Rough to Very Rough** from **21st October morning to 22nd October evening**, becoming **very rough to high** thereafter till **24th October morning**.

Adjoining areas of Westcentral Bay of Bengal: Sea condition is likely to be **Rough to Very Rough** on **23rd and 24th October**.

North Bay of Bengal: Sea condition is likely to be **Rough to Very Rough** from **23rd morning** and would become **High** from **24th October morning till 25th Oct forenoon**.

Along & off Odisha-west Bengal coasts: Sea condition is likely to be **Rough to Very Rough** from **23rd evening** and would become **High** from **24th October evening to 25th Oct forenoon**.

(iv) Fishermen Warning:

Fishermen are advised not to venture into

- Andaman Sea till 21st October.
- Eastcentral Bay of Bengal during 21st-24th October.
- **Adjoining areas of Westcentral Bay of Bengal on 23rd and 24th Oct.**
- **North Bay of Bengal** and along & off Odisha, West Bengal and Bangladesh coasts during 23rd to 25th October.

Fishermen out at sea are advised to return to coasts by 21st Oct.

(v) Impact Expected [along Odisha and West Bengal coasts due to heavy rainfall]

- Localized Flooding of roads, water logging in low lying areas and closure of underpasses mainly in urban areas of the above region.
- Occasional reduction in visibility due to heavy rainfall.
- Disruption of traffic in major cities and roadways due to water logging in roads and poor visibility due to heavy rain leading to increased travel time and incidents
- Localized Landslides/Mudslides/landslips/mud slips/land sinks/mud sinks.
- Likely disruption of marine and inland water transportation like small boats and trawlers.
- Minor damage to kutcha roads.
- Possibilities of damage to vulnerable structure. Breaking of tree branches and uprooting of trees.
- Damage to power and communication lines.
- Damage to horticulture and standing crops in some areas due to inundation and wind.
- It may lead to riverine flooding in some river catchments (for riverine flooding please visit Webpage of Central Water Commission)

❖ Action Suggested [affected areas of Odisha and West Bengal due to heavy rainfall]

- Fishermen are advised not to venture into
 - ✓ Andaman Sea till 21st October.
 - ✓ Eastcentral Bay of Bengal during 21st-24th October.
 - ✓ **Adjoining areas of Westcentral Bay of Bengal on 23rd and 24th Oct.**

- ✓ **North Bay of Bengal** and along & off Odisha-West Bengal coasts during 23rd to 25th October morning.
- Fishermen out at sea are advised to return to coasts by 21st October.
- Total suspension of fishing operations during 22nd to 25th Oct over Central and North Bay of Bengal.
- Judicious regulation of onshore/offshore, Port and maritime activities including shipping.
- Judicious regulation of tourism activities in Andaman & Nicobar Islands.
- Judicious regulation of surface transports including railways and roadways.
- Check for traffic congestion on your route before leaving for your destination.
- Follow any traffic advisories that are issued in this regard.
- Avoid going to areas that face the water logging problems often.
- Avoid staying in vulnerable structure.

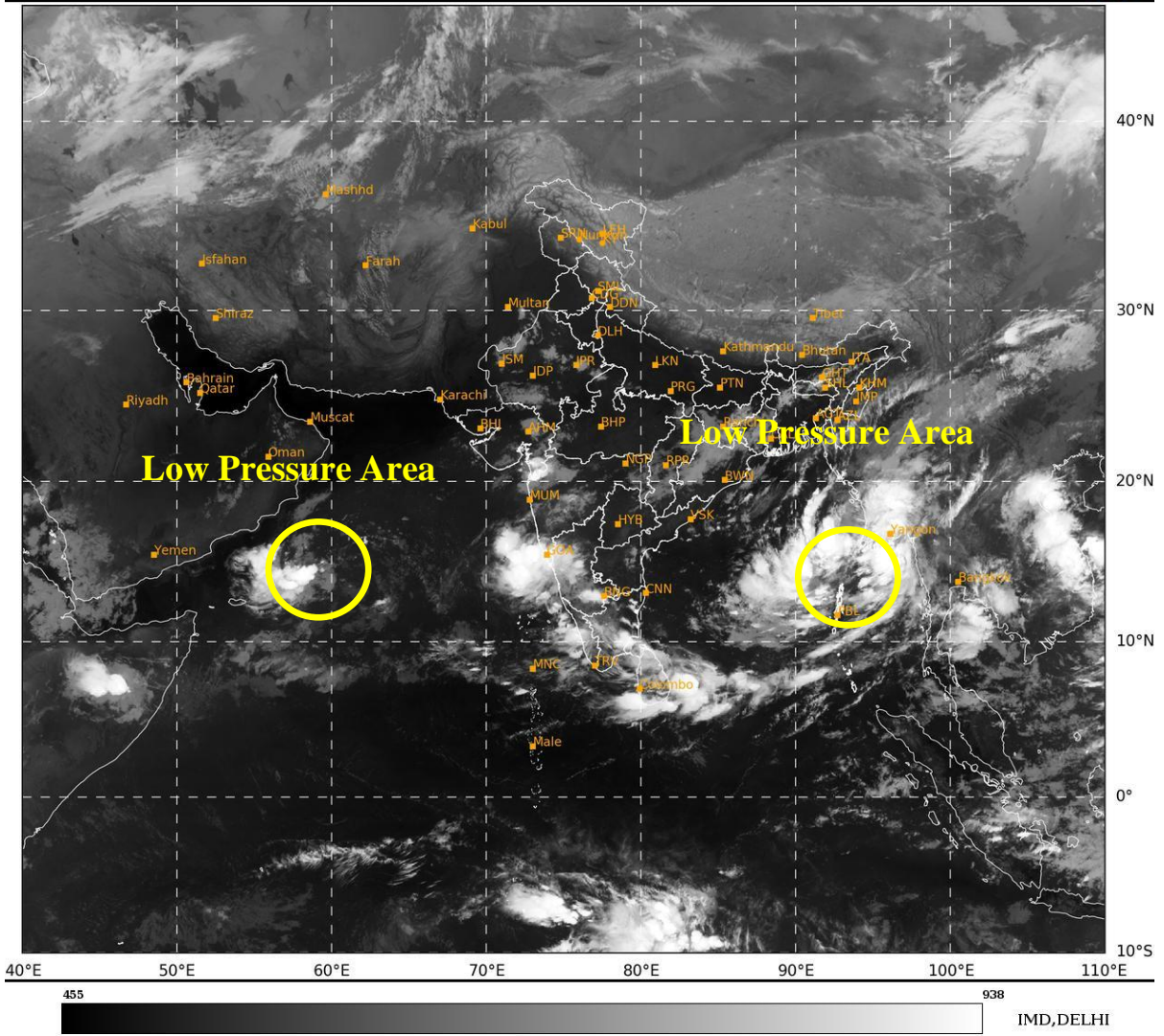
Next bulletin will be issued at 1330 hours IST of today, the 21st October, 2024.

(Monica Sharma)
Scientist-D, RSMC & IMD, New Delhi

Copy to: ACWC Kolkata/ACWC Chennai/CWC Bhubaneswar/CWC Vishakhapatnam/Meteorological Centre Port Blair

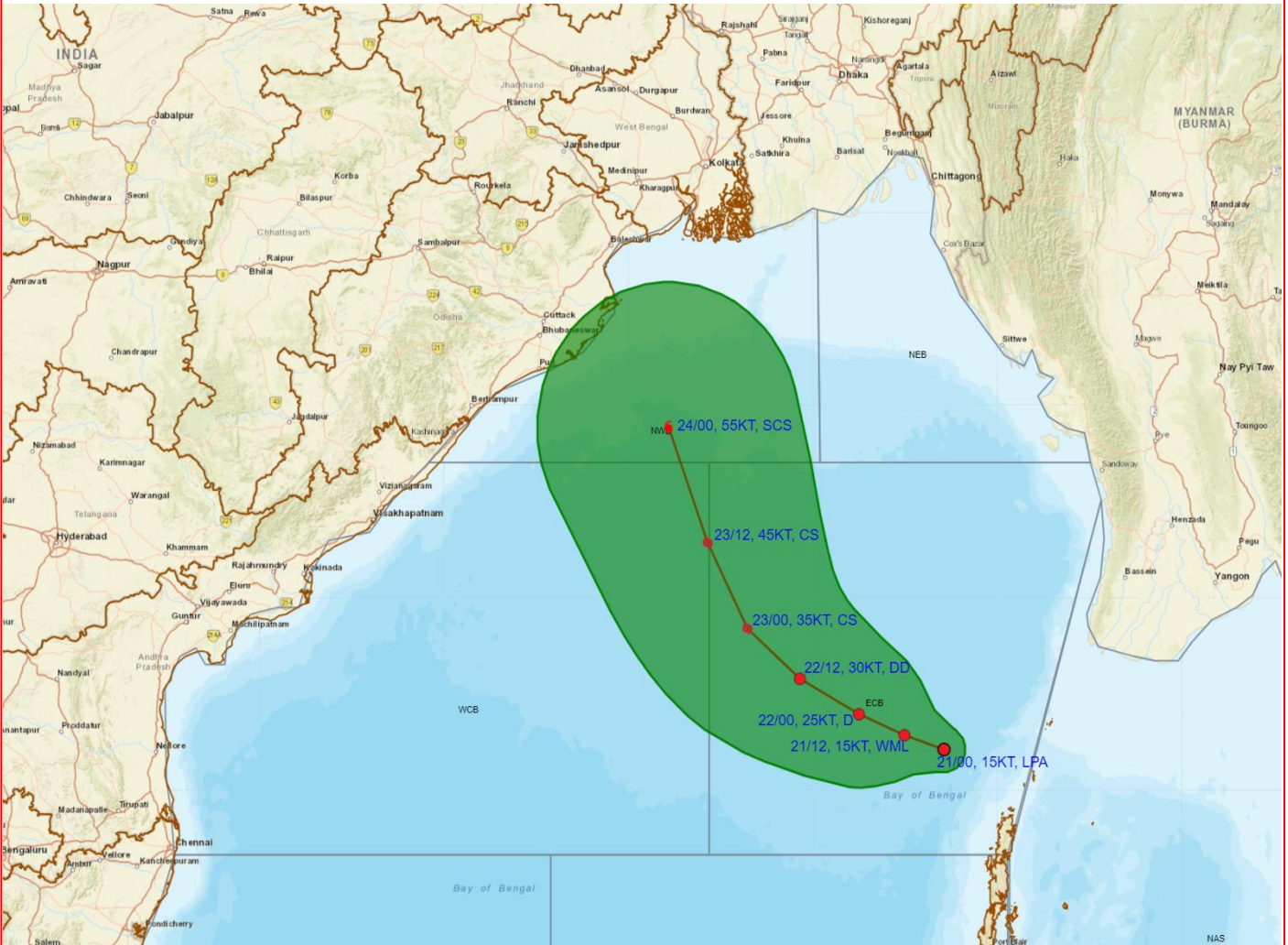
SAT : INSAT-3DR IMG
IMG_TIR1 10.8 um
LIC Mercator

21-10-2024/(0215 to 0242) GMT
21-10-2024/(0745 to 0812) IST





OBSERVED AND FORECAST TRACK ALONGWITH CONE OF UNCERTAINTY OF LOW PRESSURE AREA OVER EASTCENTRAL BAY OF BENGAL AND ADJOINING NORTH ANDAMAN SEA BASED ON 0000 UTC (0530 Hrs. IST) OF 21ST OCTOBER 2024



DATE/TIME IN UTC

IST=UTC + 0530

L: LOW PRESSURE AREA

WML: WELL MARKED LOW PRESSURE AREA

D: DEPRESSION (17-27 KT)

DD: DEEP DEPRESSION (28-33 KT)

CS: CYCLONIC STORM (34-47 KT)

SCS: SEVERE CYCLONIC STORM (48-63KT)

VSCS: VERY SEVERE CYCLONIC STORM (64-89 KT)

ESCS: EXTREMELY SEVERE CYCLONIC STORM (90-119 KT)

SuCS: SUPER CYCLONIC STORM (≥ 120 KT)



LESS THAN 34 KT



34-47 KT



≥ 48 KT



OBSERVED TRACK



FORECAST TRACK

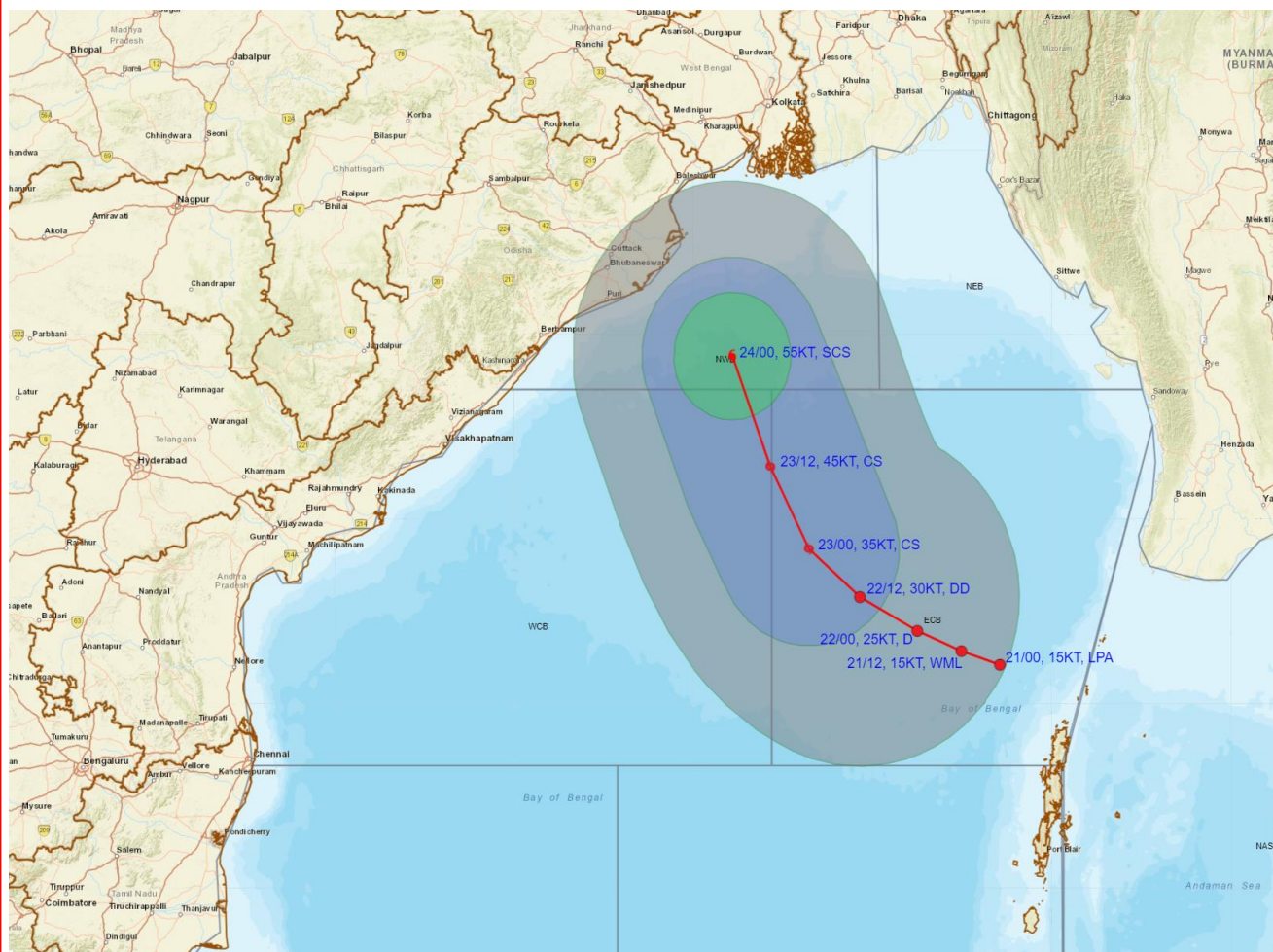


CONE OF UNCERTAINTY

KNOT (KT) = 1.85 kmph



OBSERVED AND FORECAST TRACK ALONGWITH QUADRANT WIND DISTRIBUTION OF LOW PRESSURE AREA OVER EASTCENTRAL BAY OF BENGAL AND ADJOINING NORTH ANDAMAN SEA BASED ON 0000 UTC (0530 Hrs. IST) OF 21ST OCTOBER 2024



DATE/TIME IN UTC

IST=UTC + 0530

L: LOW PRESSURE AREA

WML: WELL MARKED LOW PRESSURE AREA

D: DEPRESSION (17-27 KT)

DD: DEEP DEPRESSION (28-33 KT)

CS: CYCLONIC STORM (34-47 KT)

SCS: SEVERE CYCLONIC STORM (48-63KT)

VSCS: VERY SEVERE CYCLONIC STORM (64-89 KT)

ESCS: EXTREMELY SEVERE CYCLONIC STORM (90-119 KT)

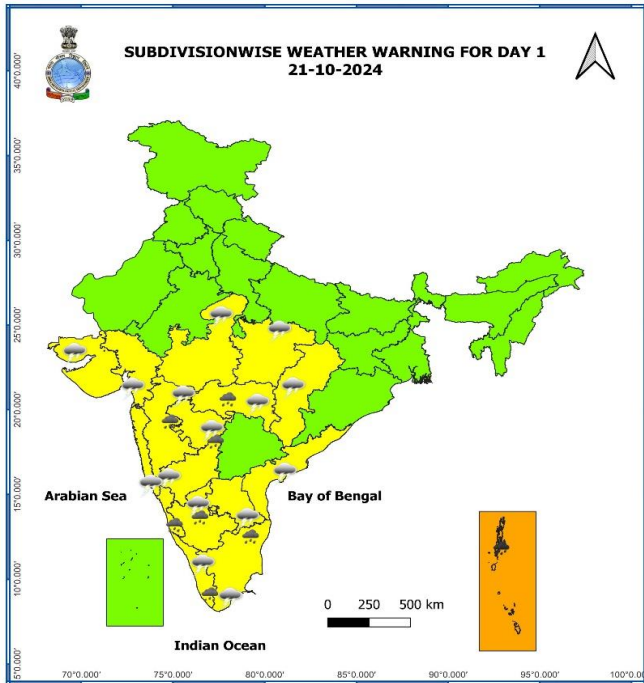
SuCS: SUPER CYCLONIC STORM (≥ 120 KT)

- LESS THAN 34 KT
- 34-47 KT
- ≥ 48 KT
- OBSERVED TRACK
- FORECAST TRACK
- CONE OF UNCERTAINTY
- AREA OF MAXIMUM SUSTAINED WIND SPEED:
- 28-33 KT (52-61 KMPH)
- 34-49 KT (62-91 KMPH)
- 50-63 KT (92-117 KMPH)
- ≥ 64 KT (≥ 118 KMPH)

IMPACT OVER THE SEA

MSW (knot/kmph)	Impact	Action
28-33 (52-61)	Very rough seas	Total suspension of fishing operations
34-49 (62-91)	High to very high seas	Total suspension of fishing operations
50-63 (92-117)	Very high seas	Total suspension of fishing operations
≥ 64 (≥ 118)	Phenomenal	Total suspension of fishing operations

KNOT (KT) = 1.85 kmph



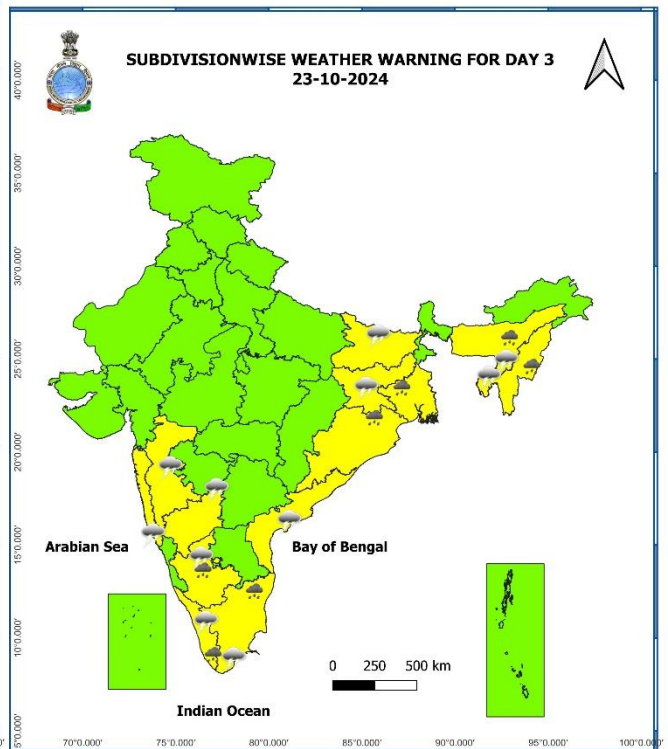
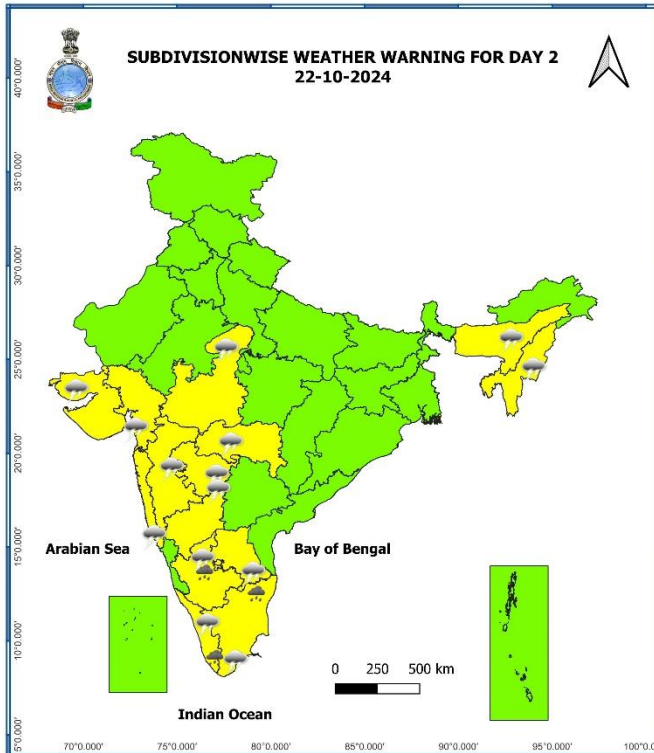
- Heavy Rain
- Very Heavy Rain
- Extremely Heavy Rain
- Thunder & Lightning

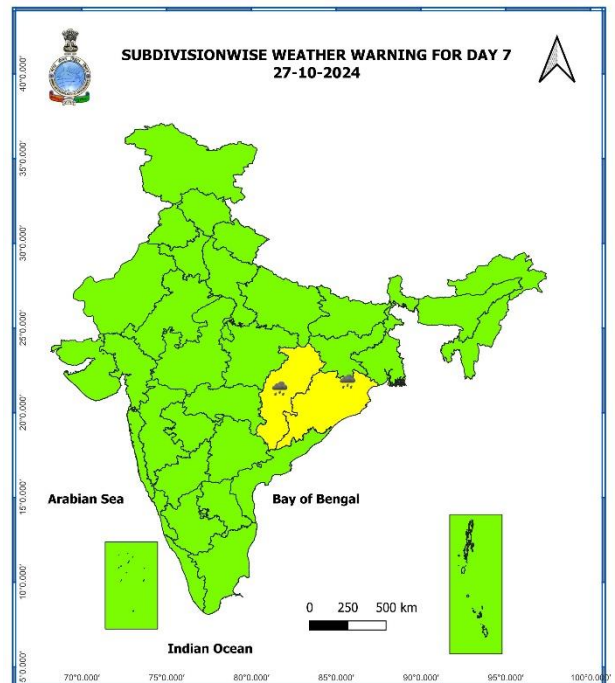
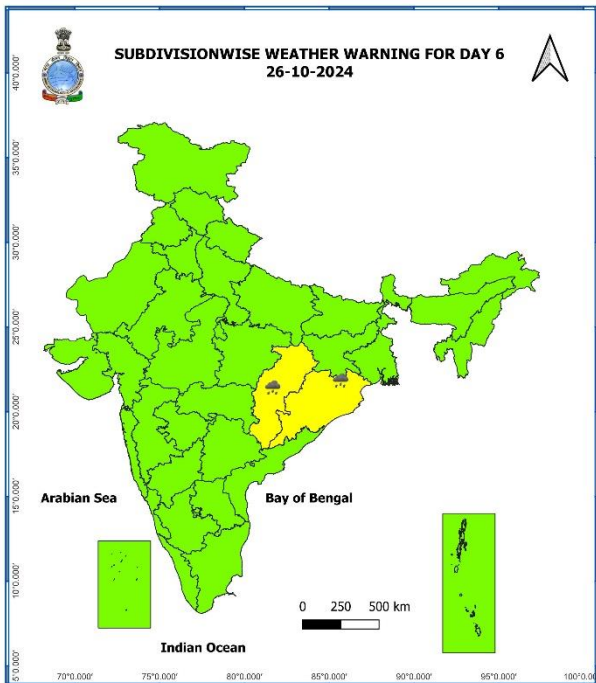
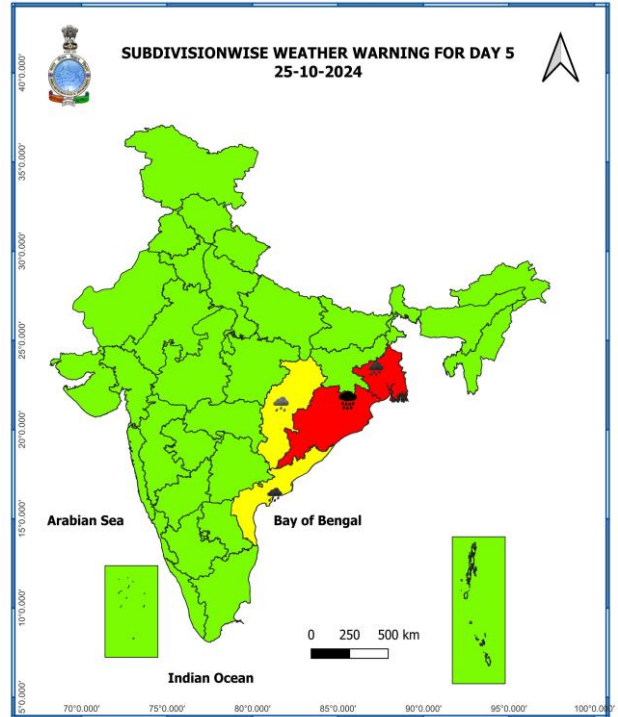
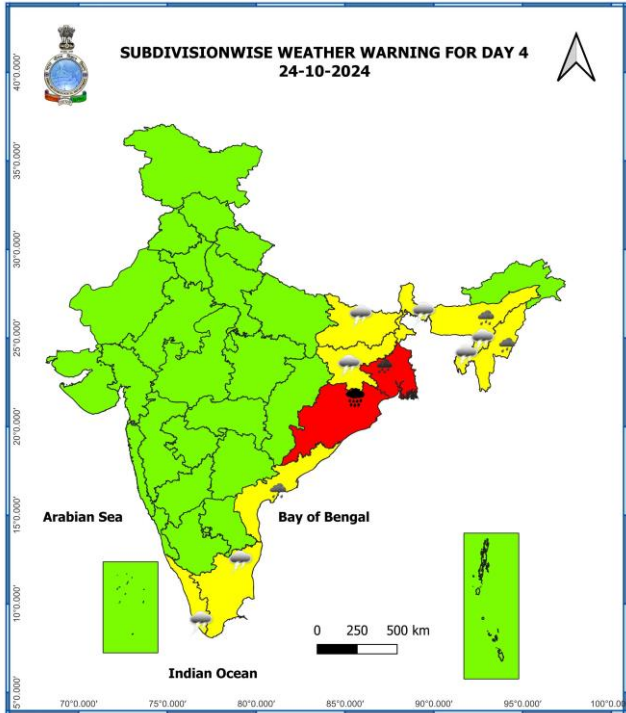
COLOUR CODED WARNING

- No Warning (No Action)
- Watch (Be Aware)
- Alert (Be Prepared To Take Action)
- Warning (Take Action)

Probabilistic Forecast

Terms	Probability of Occurrence (%)
Unlikely	< 25
Likely	25 - 50
Very Likely	50 - 75
Most Likely	> 75





- Action may be taken based on **ORANGE AND RED** COLOUR warnings.
- Vulnerable regions likely urban and hilly areas action may be initiated for heavy rainfall warning.
- As the lead period increases forecast accuracy decreases.

Fishermen Warning Graphics

